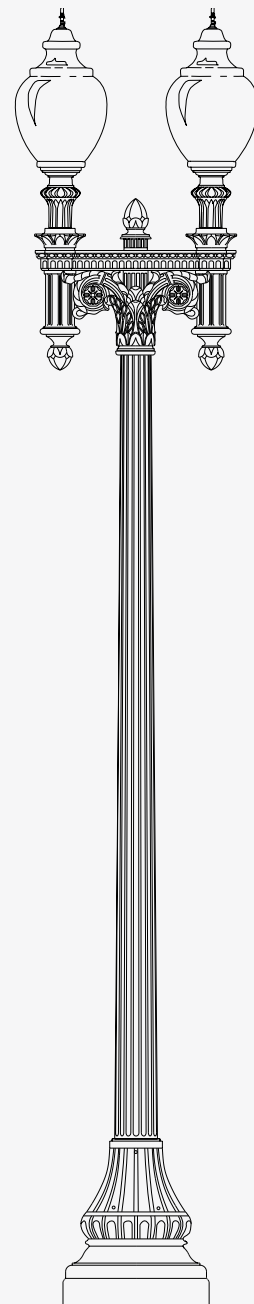




Shakespeare Composite Structures

Decorative Arms and Brackets





803.276.5504 · 800.800.9008 · F/803.276.8940
www.skp-cs.com · decorative@skp-cs.com

A Division of Genlyte Thomas Group, LLC

THE HISTORICAL SERIES

Catalog number:

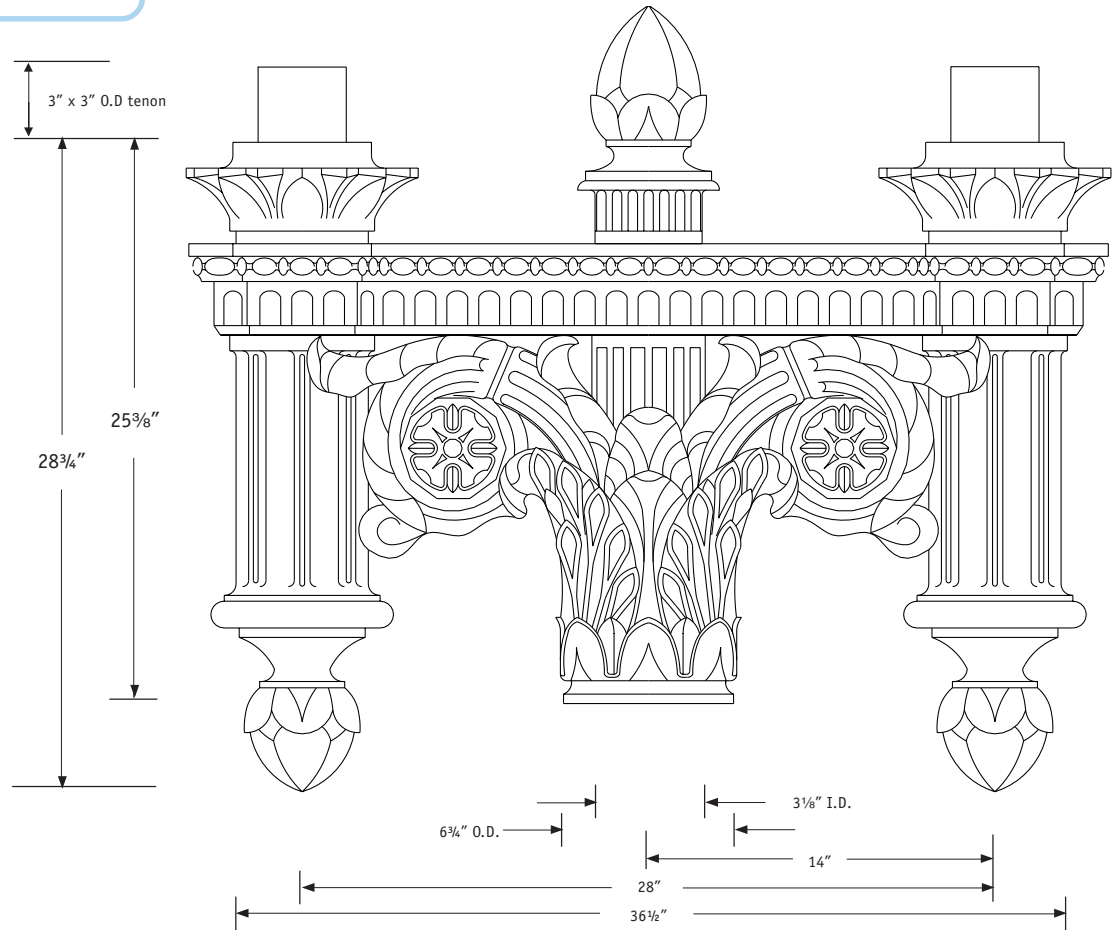
DCTW

Material: Fiberglass reinforced composite (specify color)

Weight: 70 lbs.

EPA: 5.3 sq. ft.

Requires: 3" O.D. x 6" tall tenon



**Distinctive,
classical beauty**

Virtually maintenance free,
fiberglass reinforced composite

One-piece construction

Standard or custom finishes
and colors to match poles

Standard 3" x 3" dia.
aluminum tenons for luminaire
mounting



Washington, DC, historic district:
Shakespeare Composite Structures™ D.C.
Style Tuff-Pole® with DCTW Twin-fixture
Decorative arm and Shakespeare's Style
FAA composite luminaires.

SCTW

Shakespeare Composite Structures™ Composite Twin-fixture Arm

All dimensions and specifications nominal, and subject to change without notice or obligation. Please contact factory before site preparation begins.

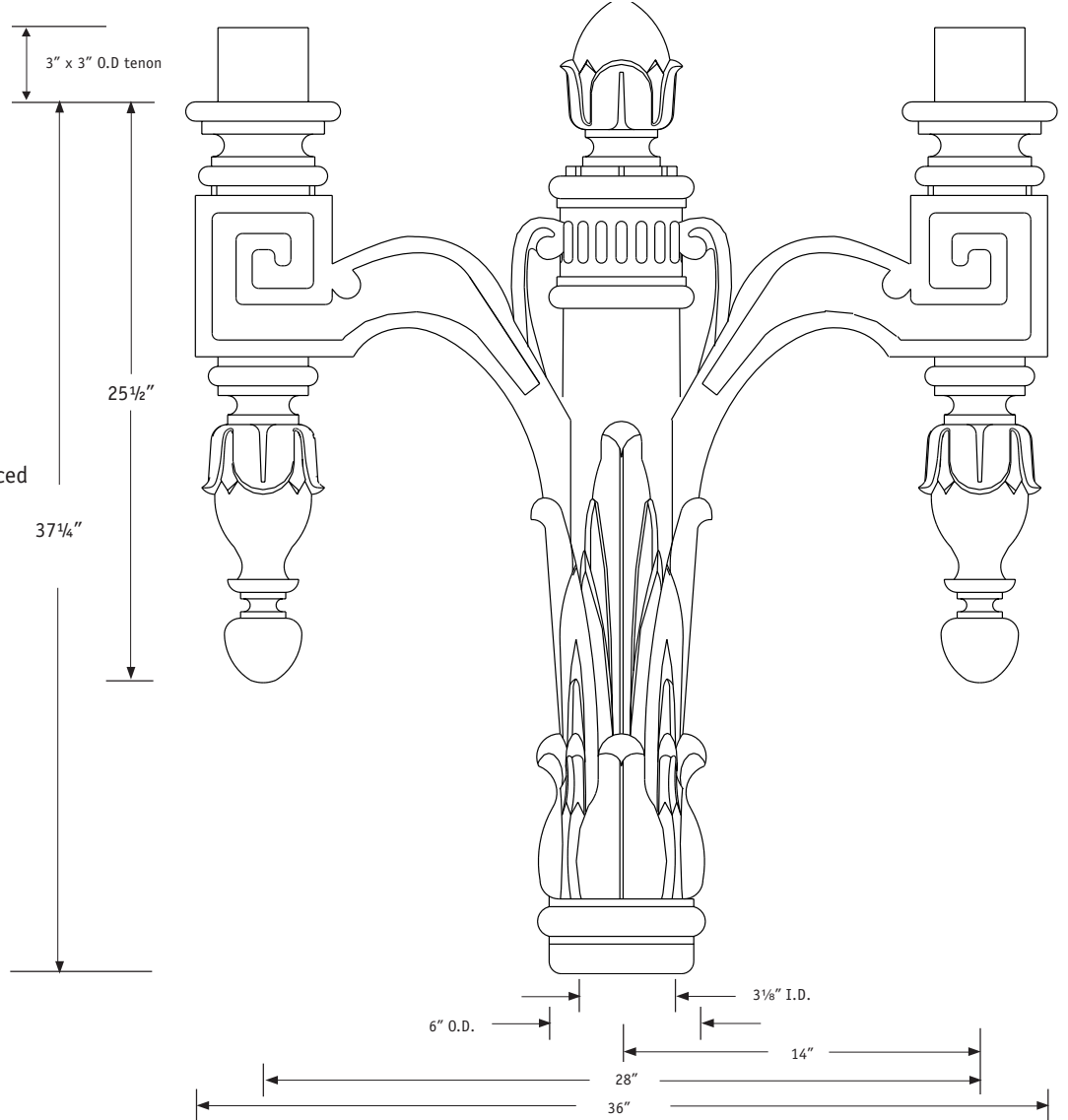
Catalog number:

SCTW

Material: Fiberglass reinforced composite (specify color)

Weight: 40 lbs.

EPA: 4.3 sq. ft.



Washington Style pole with SCTW Twin-fixture Decorative Twin Arm and two acorn luminaires

These decorative arms look great with fluted or smooth shafts on Shakespeare Composite Structures™ D.C., San Gabriel, and Washington style Tuff-Poles®.

THE HISTORICAL SERIES



803.276.5504 · 800.800.9008 · F/803.276.8940
www.skp-cs.com · decorative@skp-cs.com

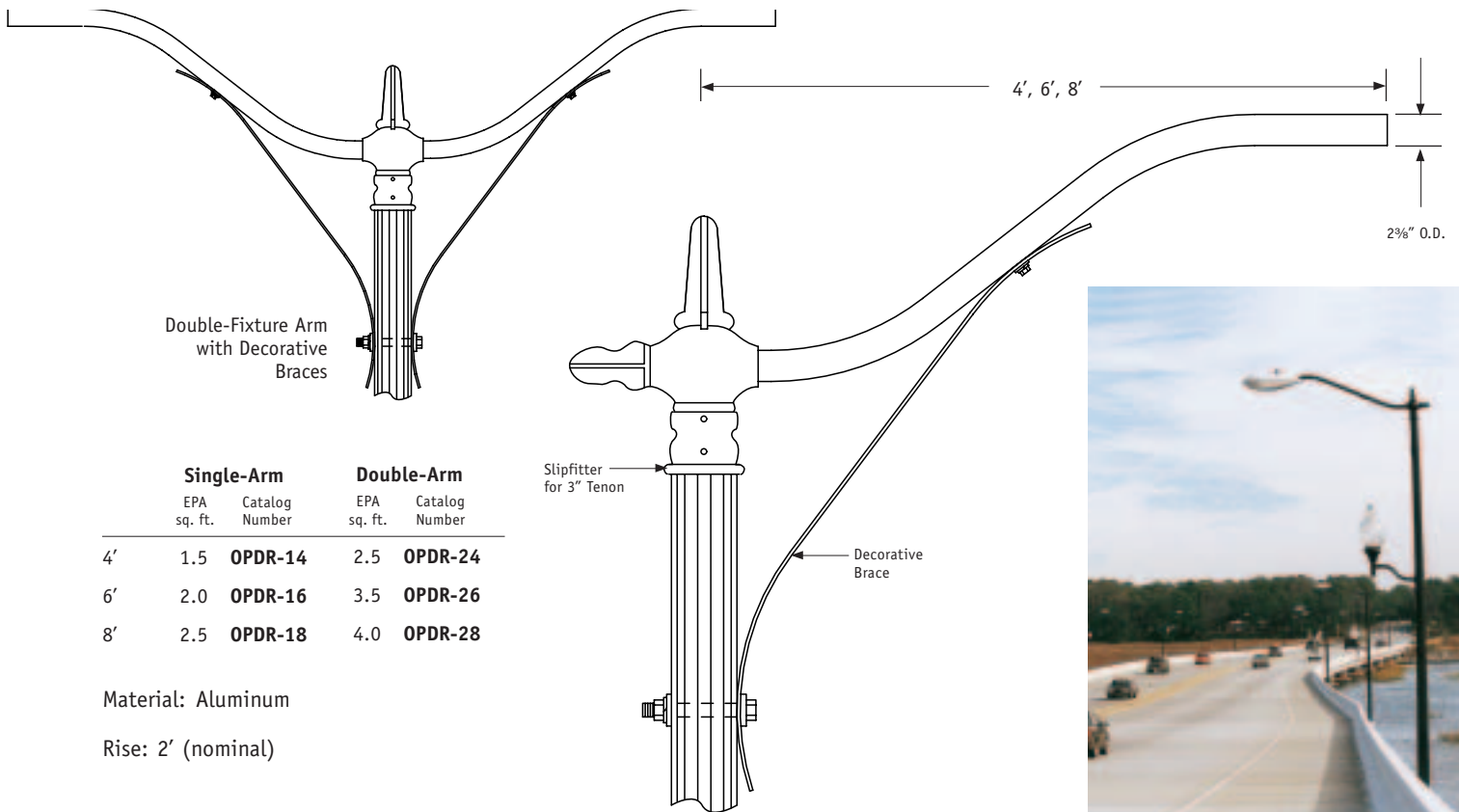
A Division of Genlyte Thomas Group, LLC

San Gabriel Style Tuff-Pole® with SCTW Twin-fixture Decorative Twin Arm and acorn luminaires



Decorative Single- or Double-Fixture Arm

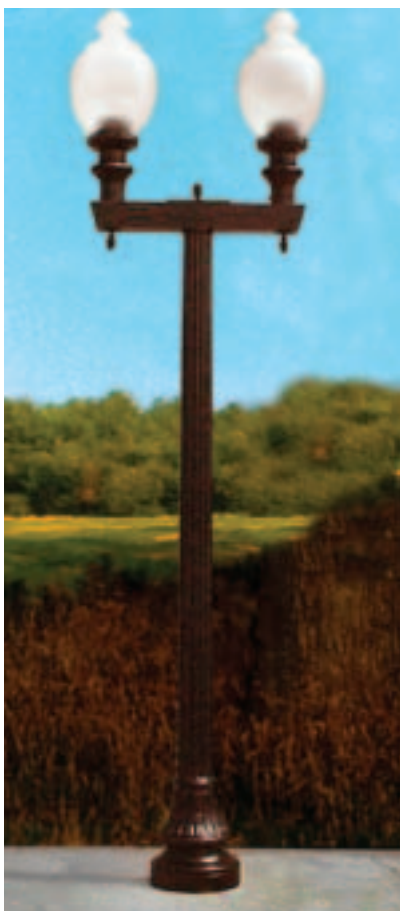
Tenon mounted, 4', 6' or 8' arms



Single-Arm			Double-Arm		
	EPA sq. ft.	Catalog Number	EPA sq. ft.	Catalog Number	
4'	1.5	OPDR-14	2.5	OPDR-24	
6'	2.0	OPDR-16	3.5	OPDR-26	
8'	2.5	OPDR-18	4.0	OPDR-28	

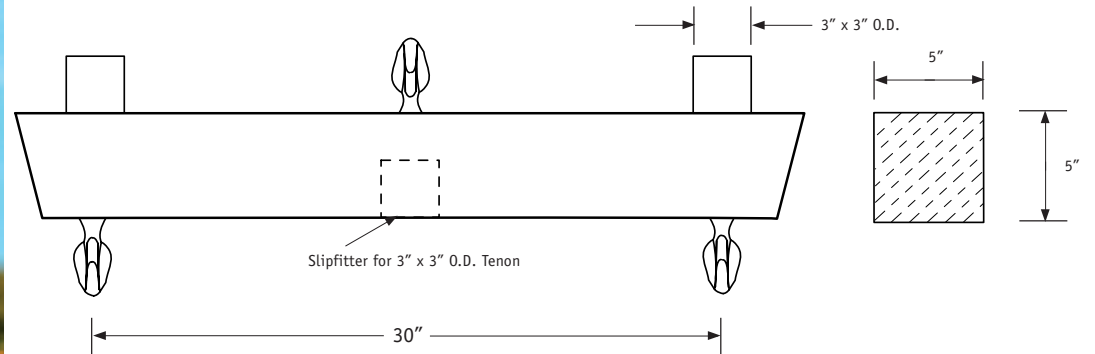
Material: Aluminum

Rise: 2' (nominal)



A-30 Decorative Twin-Fixture Arm

Tenon mounted



Material: Aluminum (specify color)

Weight: 16 lbs.

Catalog Number: A-30

THE HISTORICAL SERIES

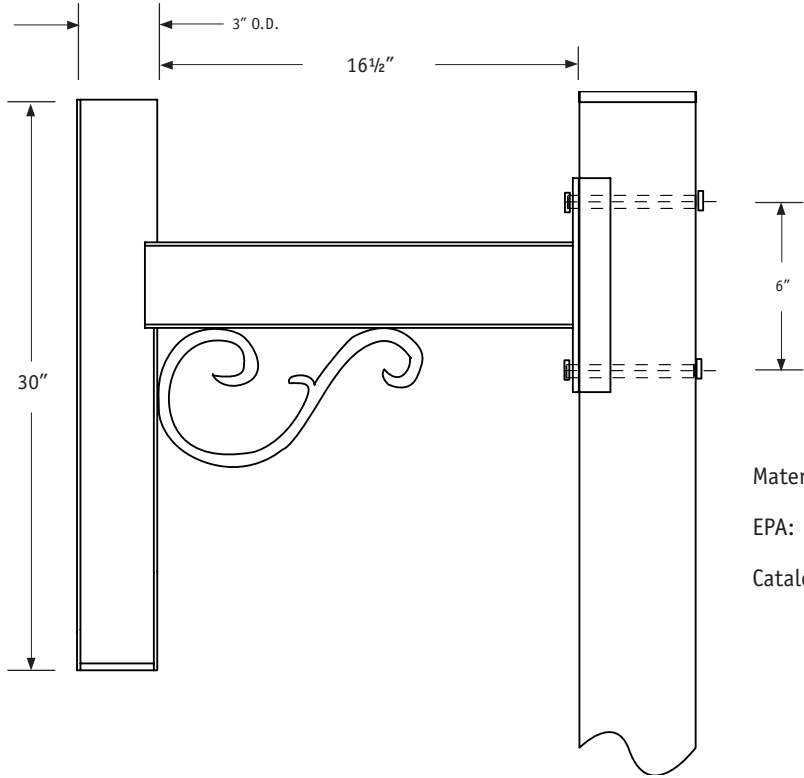
Decorative Brackets

Aluminum

All dimensions and specifications nominal, and subject to change without notice or obligation. Please contact factory before site preparation begins.

THE HISTORICAL SERIES

OPAR-1.5-30S Decorative Side Bracket

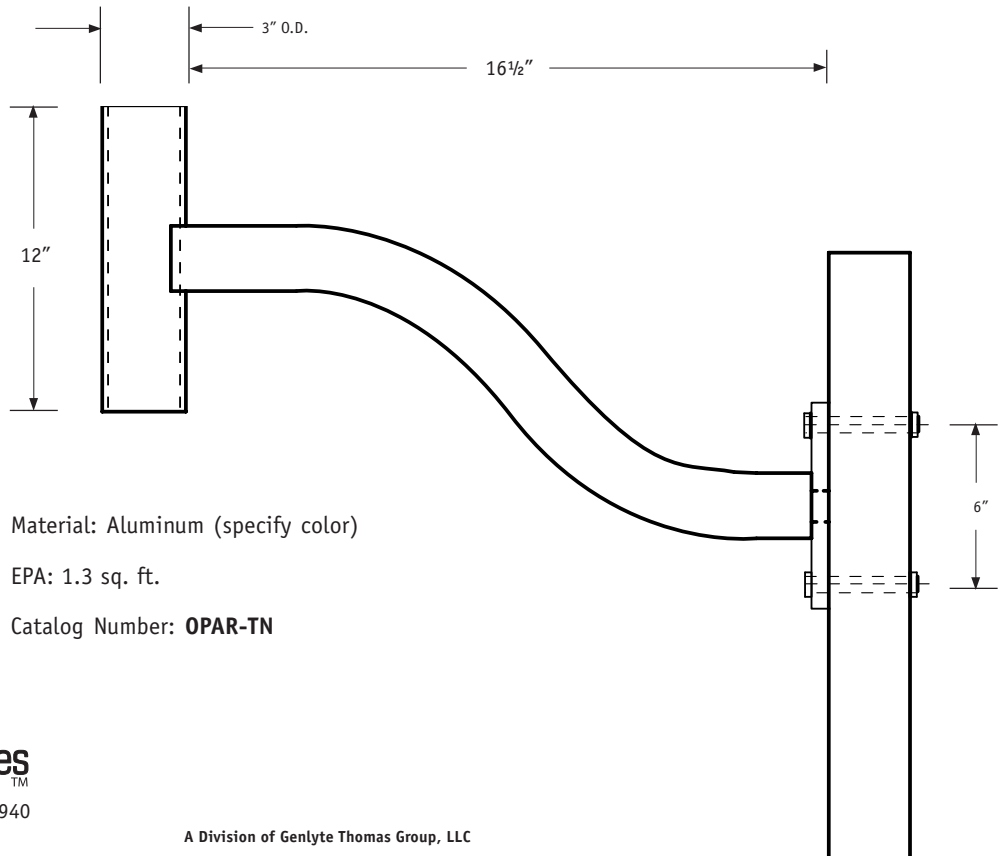


Material: Aluminum (specify color)

EPA: 1.3 sq. ft.

Catalog Number: **OPAR-1.5-30S**

OPAR-1.5-30S Decorative Side Bracket



Material: Aluminum (specify color)

EPA: 1.3 sq. ft.

Catalog Number: **OPAR-TN**



803.276.5504 · 800.800.9008 · F/803.276.8940
www.skp-cs.com · decorative@skp-cs.com

A Division of Genlyte Thomas Group, LLC